



WEST EUGENE INDUSTRIAL CORRIDOR

ENVIRONMENTAL
HEALTH PROJECT

CENTRO
LATINO
AMERICANO



OREGON
TOXICS
ALLIANCE

The Partnership

Two-thirds of Centro's clients
reside in West Eugene

OTA has worked in
West Eugene's impacted
neighborhoods for 9 years



Ellie

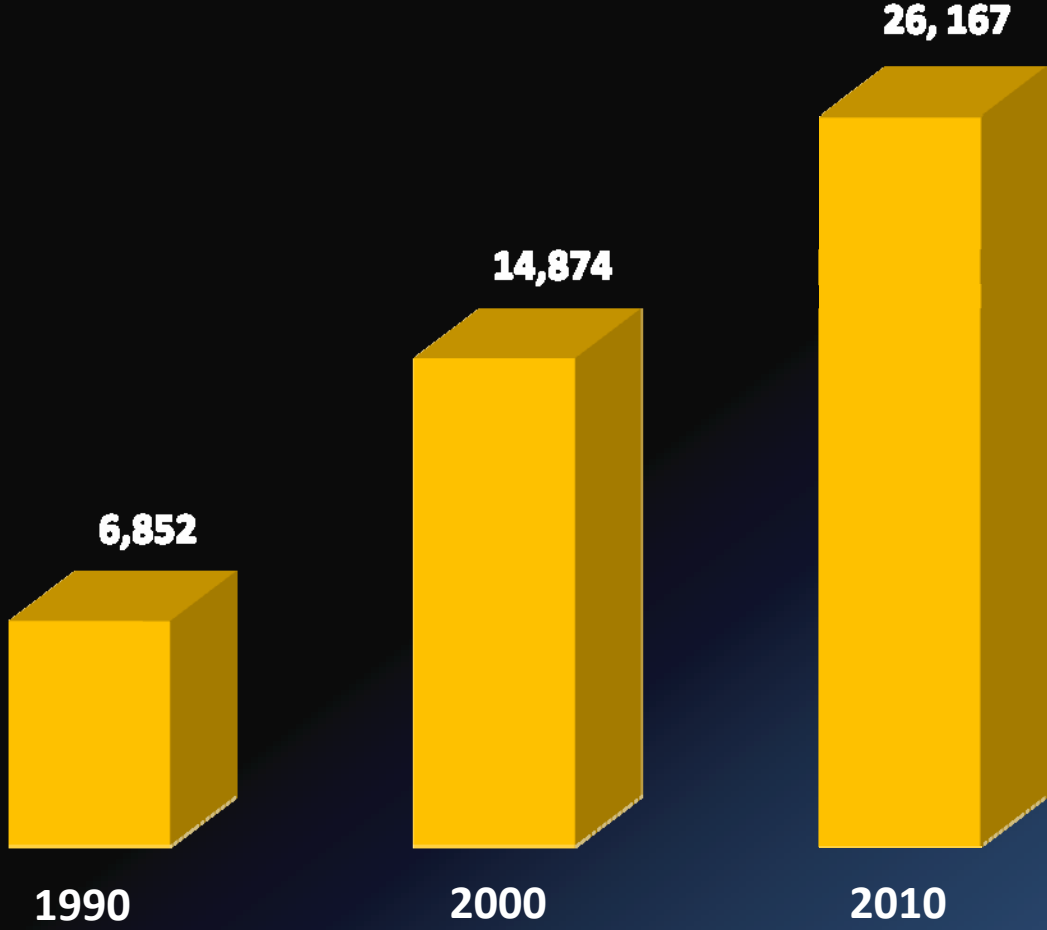
Ellie Aguirre lives close to industrial plants and less than a mile from the nearest highway.

She feels passionate about a healthy future for her family.

West Eugene Industrial Corridor



Latinos in Lane County



1990-2000
Hispanic residents more than doubled

2000-2010
Hispanic residents increased by 75.9%

Source: 2010 US Census Bureau



Hispanics in West Eugene

Eugene - 8 - 9% Hispanic Population

The percentages are higher in Trainsong, Bethel, and Santa Clara neighborhoods.



Latino Students in West Eugene

<u>School</u>	<u>Hispanic Students</u>
Fairfield Elem.	32.0%
Danebo Elem.	25.6%
Praire Mountain	18.0%
Cascade Middle	17.7%
Willamette HS	16.2%
Clear Lake Elem.	12.2%
Shasta Middle	11.6%
Kalapuya HS	10.5%
South Eugene HS	4.2%

Source: Bethel School District

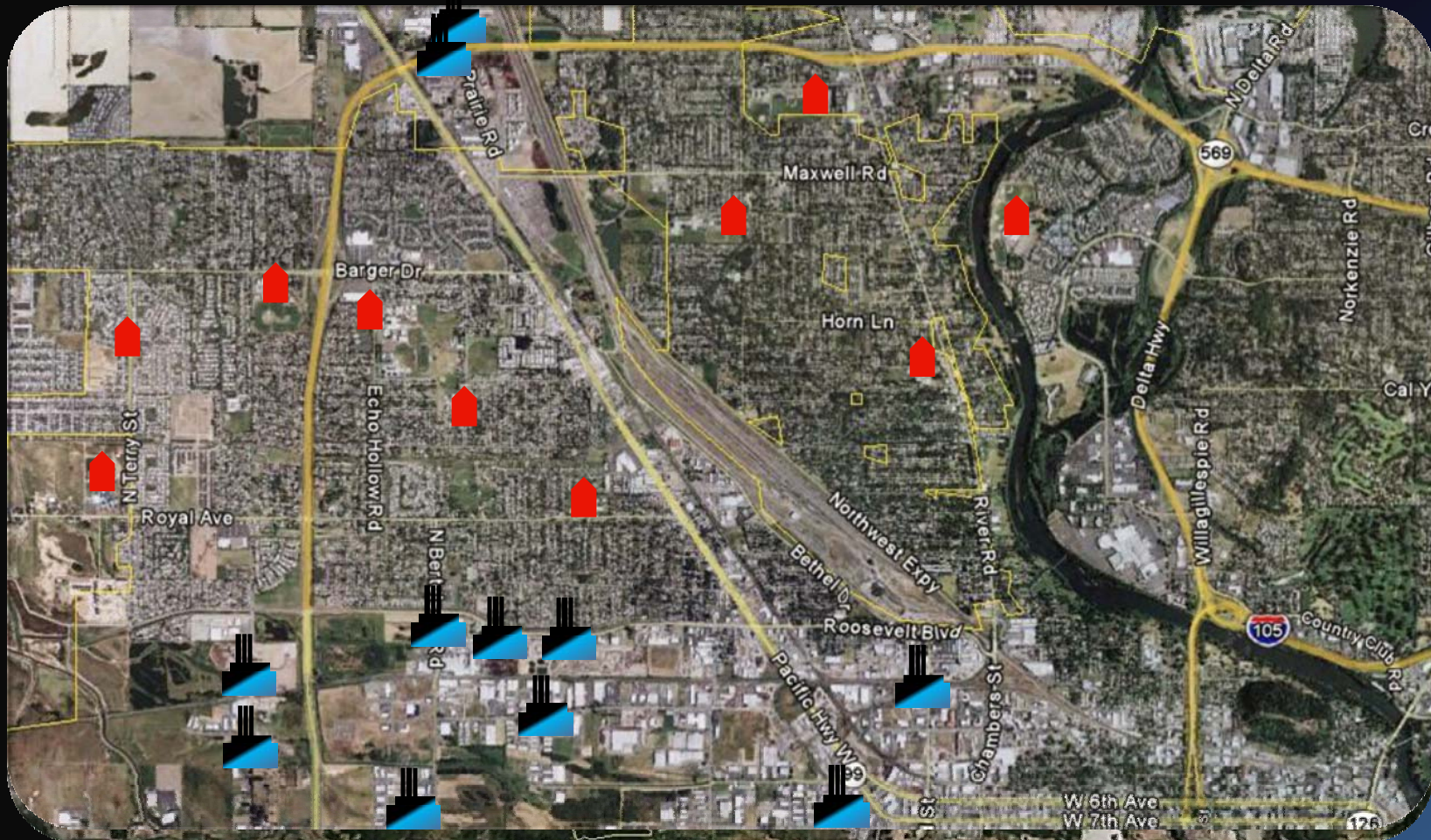


Environmental Justice

Addressing the concern that certain populations disproportionately experience higher than average exposures to:

- Certain air pollutants ✓
- Hazardous waste facilities
- Contaminated fish
- Agricultural pesticides
- Lead exposure

Industrial Facilities & Nearby Schools



1 mile

Source: Toxics Release Inventory
2011 <http://www.epa.gov/tri/>



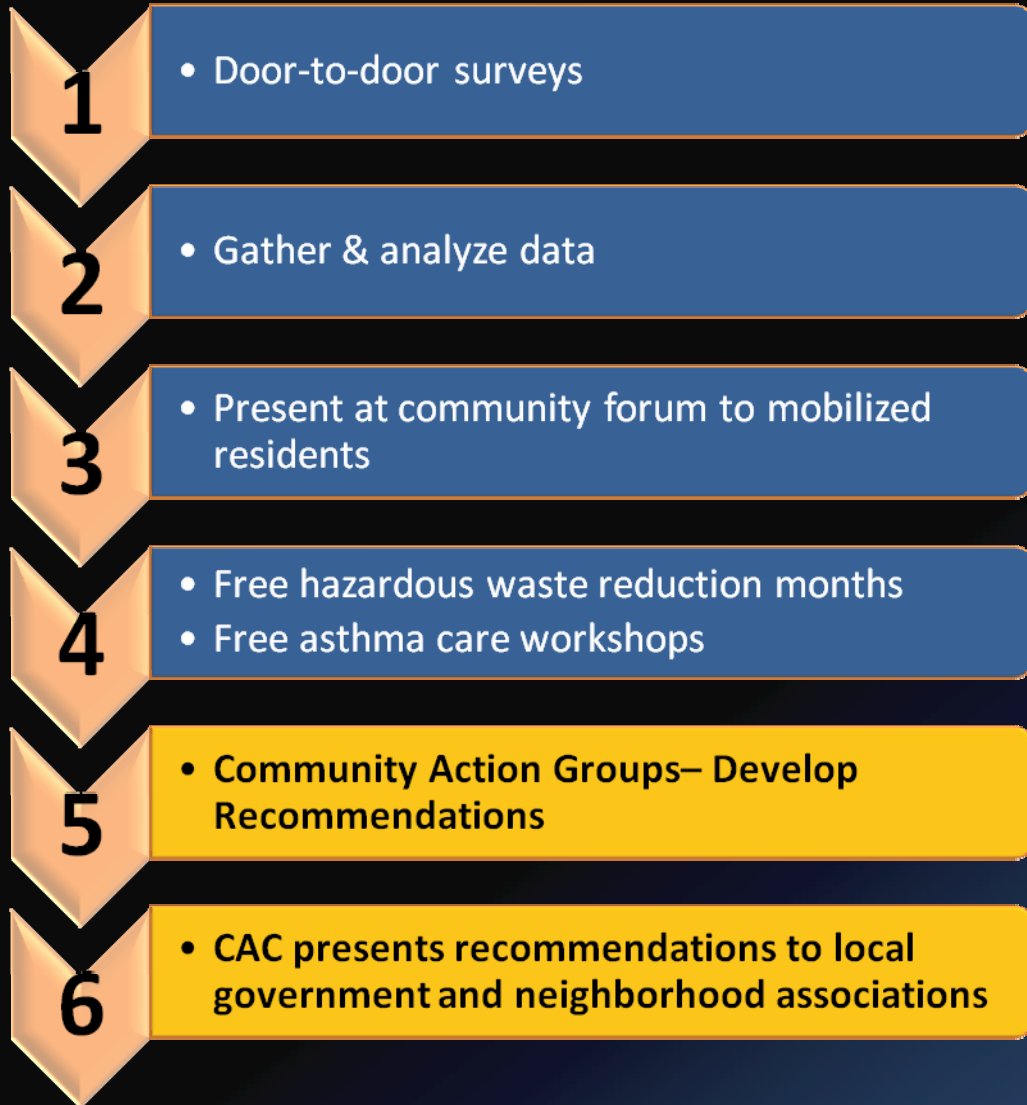
West Eugene Environmental Health Project

A Partnership between
Centro LatinoAmericano and
Oregon Toxics Alliance

Goals

- Gather information
- Raise awareness
- Empower the community

WEEHP Project Activities



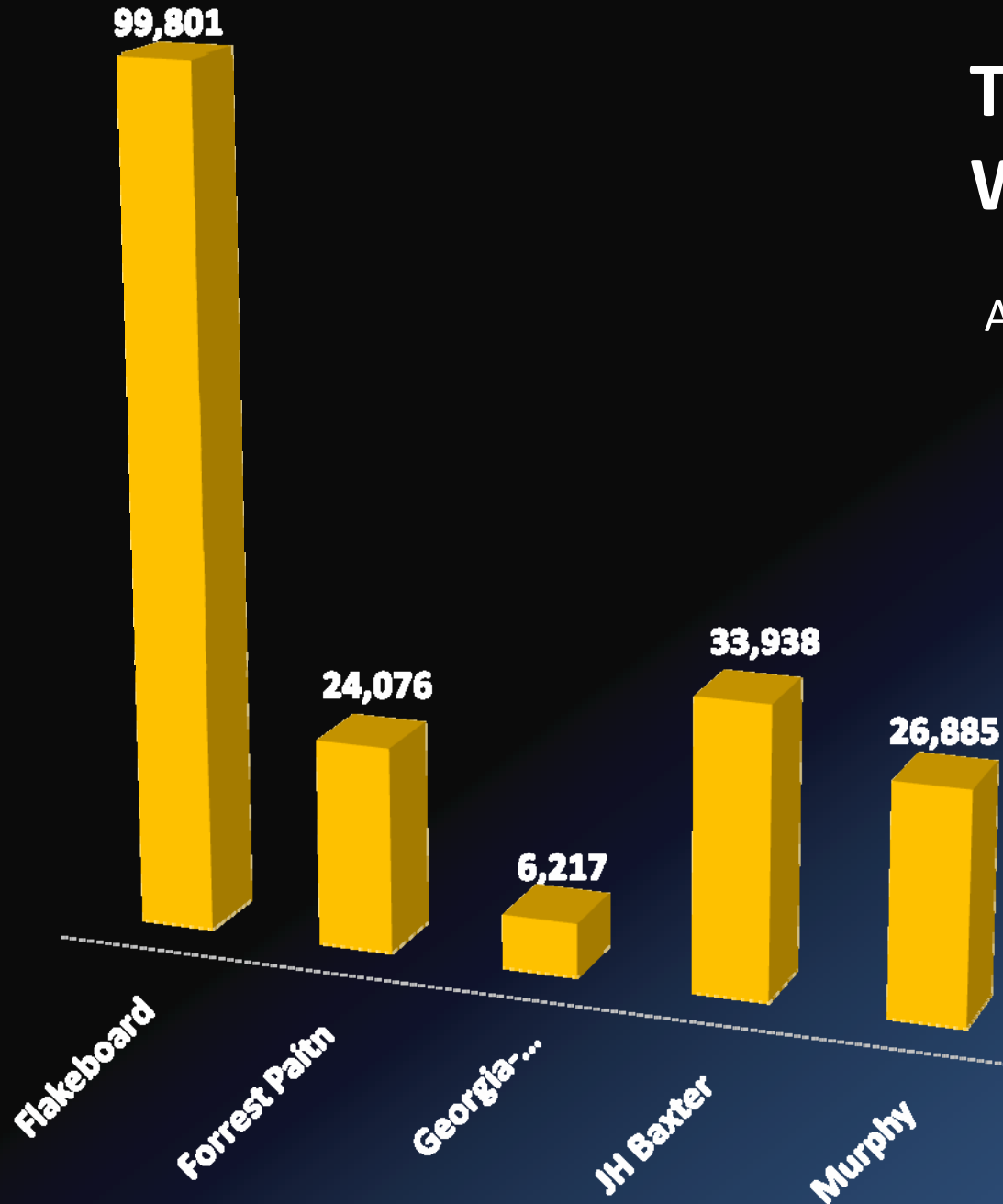


Monitored Pollutants

- Naphthalene
- Acetaldehyde
- Formaldehyde
- Ammonia
- Benzene
- Toluene
- Carbon Disulfide
- Sulfur Dioxide
- Benzyl Chloride

Toxic Emissions in West Eugene

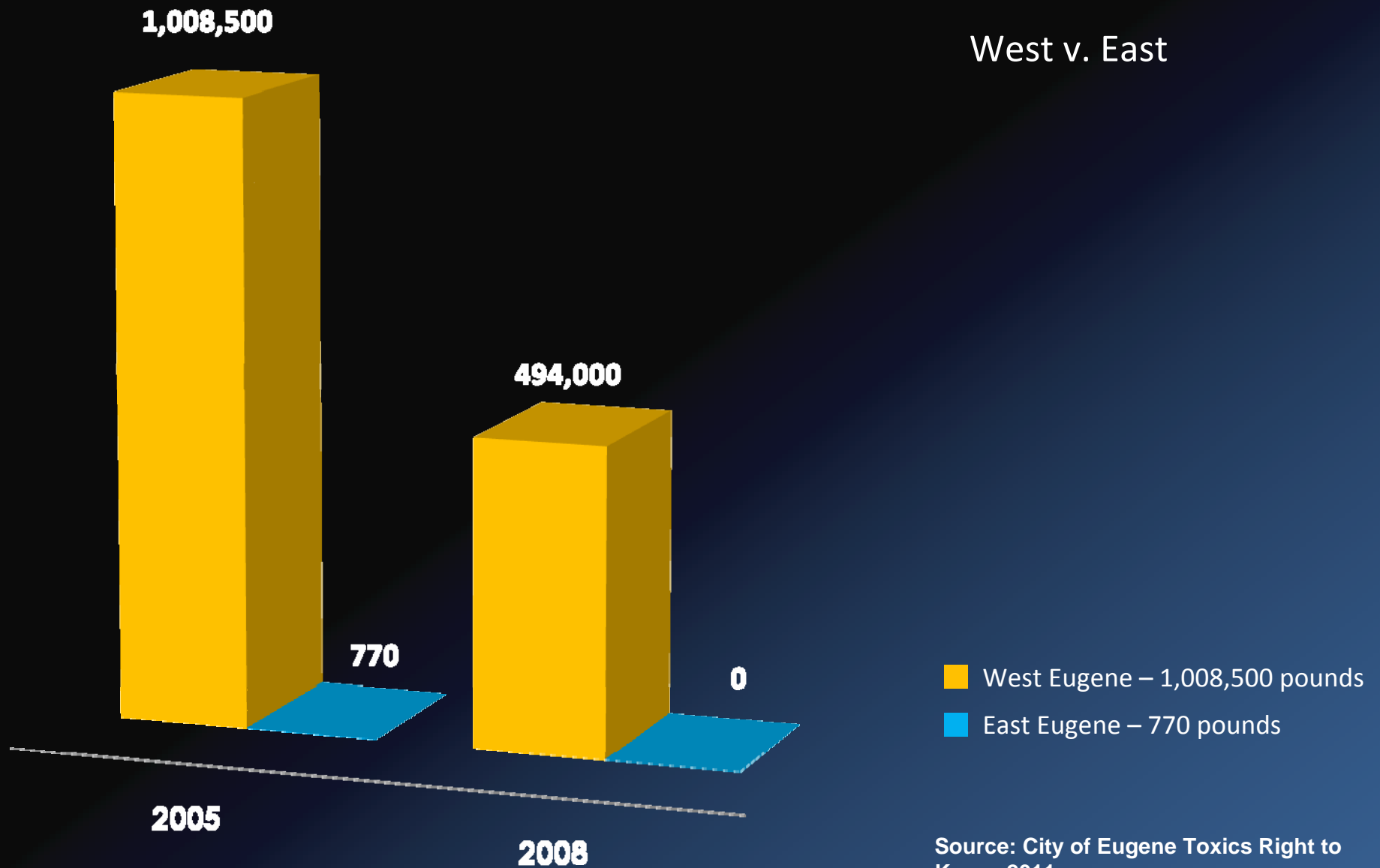
Air emissions (lbs) in 2009



Source: City of Eugene Toxics Right to Know 2011

Toxic Emissions in Eugene

West v. East



Source: City of Eugene Toxics Right to Know 2011



Health Impacts

Increased sickness and premature death from:

- Asthma
- Bronchitis
- Emphysema
- Pneumonia
- Coronary artery disease
- Abnormal heart rhythm
- Congestive heart failure



Health Survey

- 326 households surveyed
- 12% of households are Spanish speaking
- Continue to speak with households on an individual basis



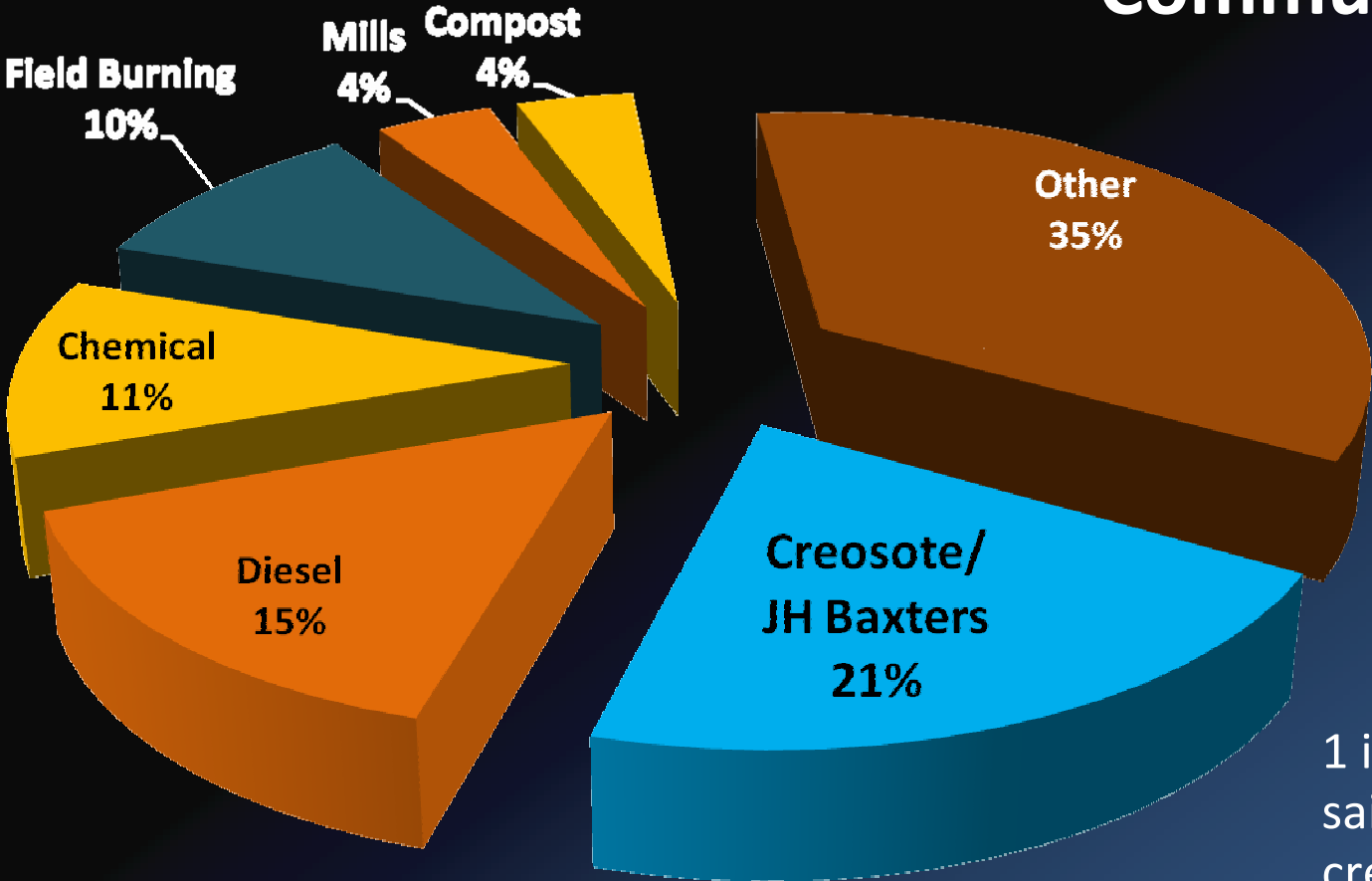
Health Survey

41% of residents surveyed believe that air quality affects them

60% households detected air pollution in their neighborhood

- Evenings throughout the year
- Summer

Air Pollution Origins Mentioned in the Community



1 in 5 people surveyed
said they smelled
creosote coming from
the JH Baxter facility

Smoking

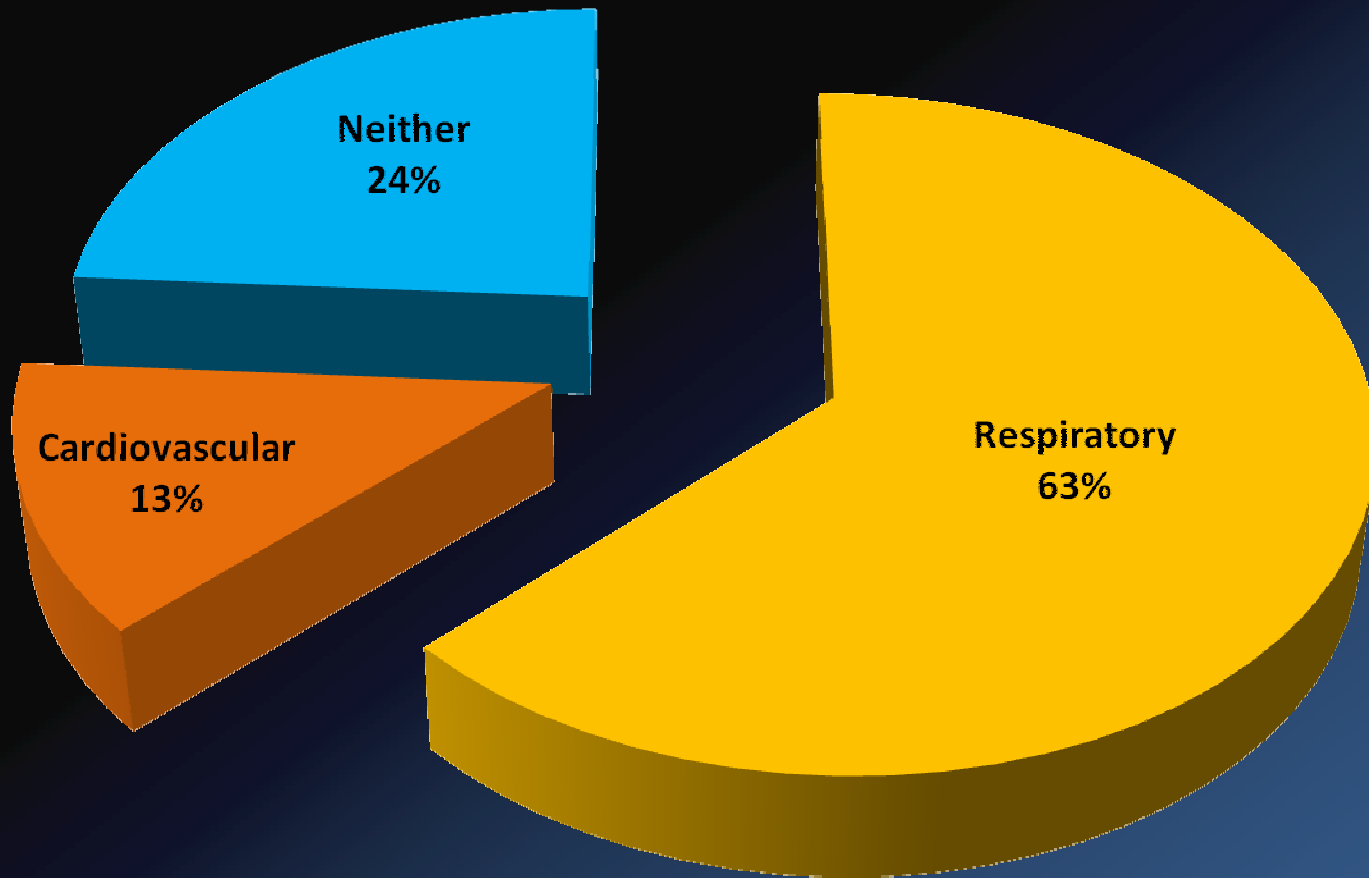
18% of the residents interviewed smoke

- **Children shouldn't be punished for the risky behaviors their parents are practicing, whether it is smoking, drugs, drinking, etc.**

Residents in West Eugene include renters, starter-up families, low-income, the elderly...

All households STILL have the right to breathe clean air regardless of whether neighbors smoke or not.

Illnesses Reported by All Household Surveyed

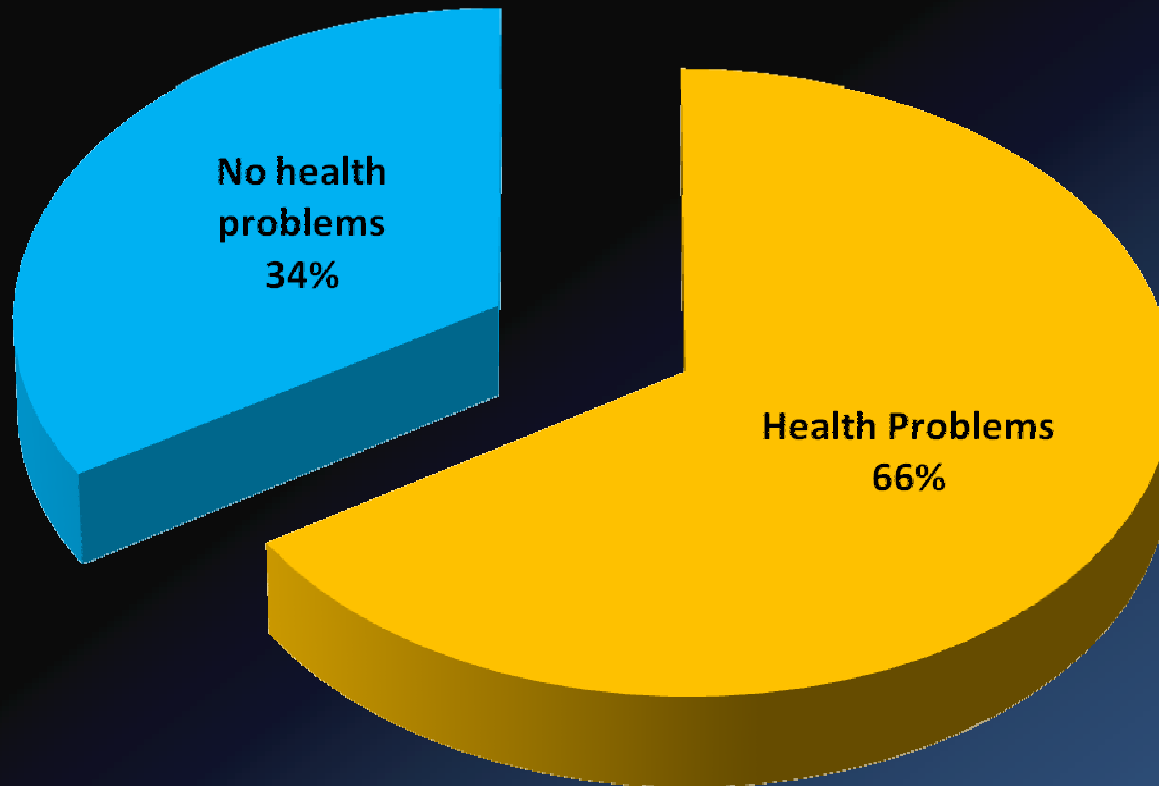


Illnesses Reported by All Household Surveyed

1 in 4 respondents (25%) who self reported these illnesses stated that their health symptoms worsened when there are detected emissions.

Illnesses Reported by Latino Households Surveyed

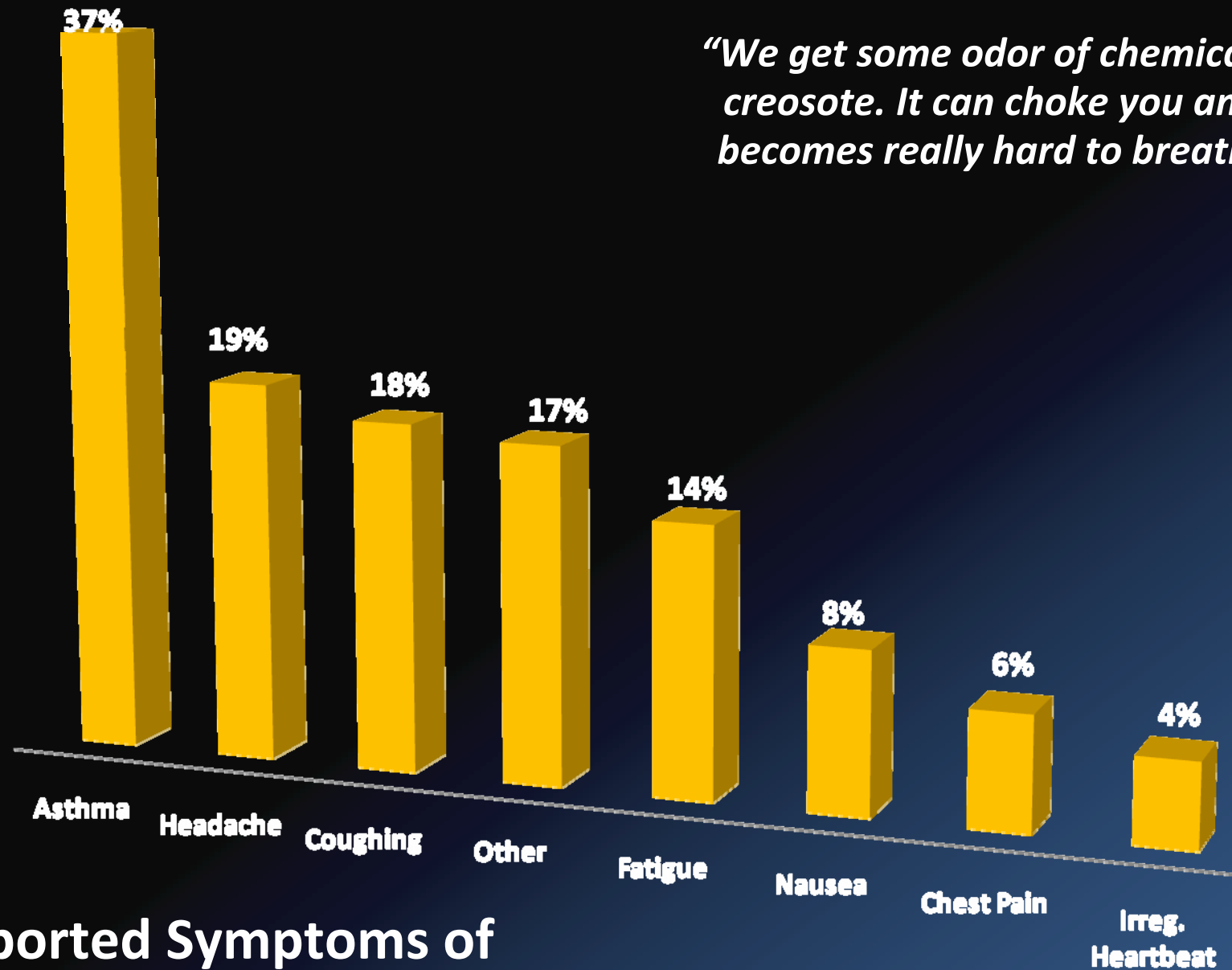
12% Latino households



Illnesses Reported by Latino Households Surveyed

*1 in 2 Latinos (50%)
with health
problems said
symptoms worsen
when there are
detected emissions.*

"We get some odor of chemicals of creosote. It can choke you and it becomes really hard to breathe."



Reported Symptoms of Total Households Surveyed

Source: Bethel School District 2011, Health Impact Assessment on Transportation Policies 2010, Oregon Department of Health

13.9%

Asthma Rates in Our Community

Asthma Rates

30% of survey respondents reported having asthma

11%

9%

9%

9%

8%

U.S.

Oregon

Marion

Multnomah

Lane

Bethel S.D.

Source: Bethel School District 2011, Health Impact Assessment on Transportation Policies 2010, Oregon Department of Health

Air Quality Index Summary (2009)

Year	Good	Moderate	Unhealthy (Sensitive)	Unhealthy
2009	321	35	8	1
2008	325	40	1	0
2007	321	40	4	0
2006	339	25	1	0
2005	294	69	2	0

Number of Days in Eugene-Springfield

- Totals include:
- Carbon Monoxide
 - Particulate Matter
 - Ozone



Health Survey

1 out of 3 respondents said they developed a respiratory or heart problem since moving to the West Eugene Industrial Corridor

WEEHP Programs



**Green Car
Maintenance
Workshop**



**Reducing local
benzene**



**Household
hazardous
waste
collection**



**Greener
cleaning kits**



**Asthma care
workshop**

West Eugene Community Action Group

Mission: *We are a community impacted by environmental toxins. Our goal is to prioritize the community's health by ensuring clean air, water, and soil, for the good of all our families.*

Formed January 2011

Meets once a month

Report scheduled late summer



Recommendations for LRAPA

- Outreach to neighborhoods for industry permits through newsletters or neighborhood association meetings.
- Spanish and English magnets of LRAPA's number to call for complaints
- Real time, fence line air samples collected at various industrial locations, including the neighborhoods surrounding the JH Baxter facility
- Status on air monitoring plan for neighborhoods surrounding JH Baxter (re: Public Health Action Plan from DHS Report)