

# Need to Edit this Video?

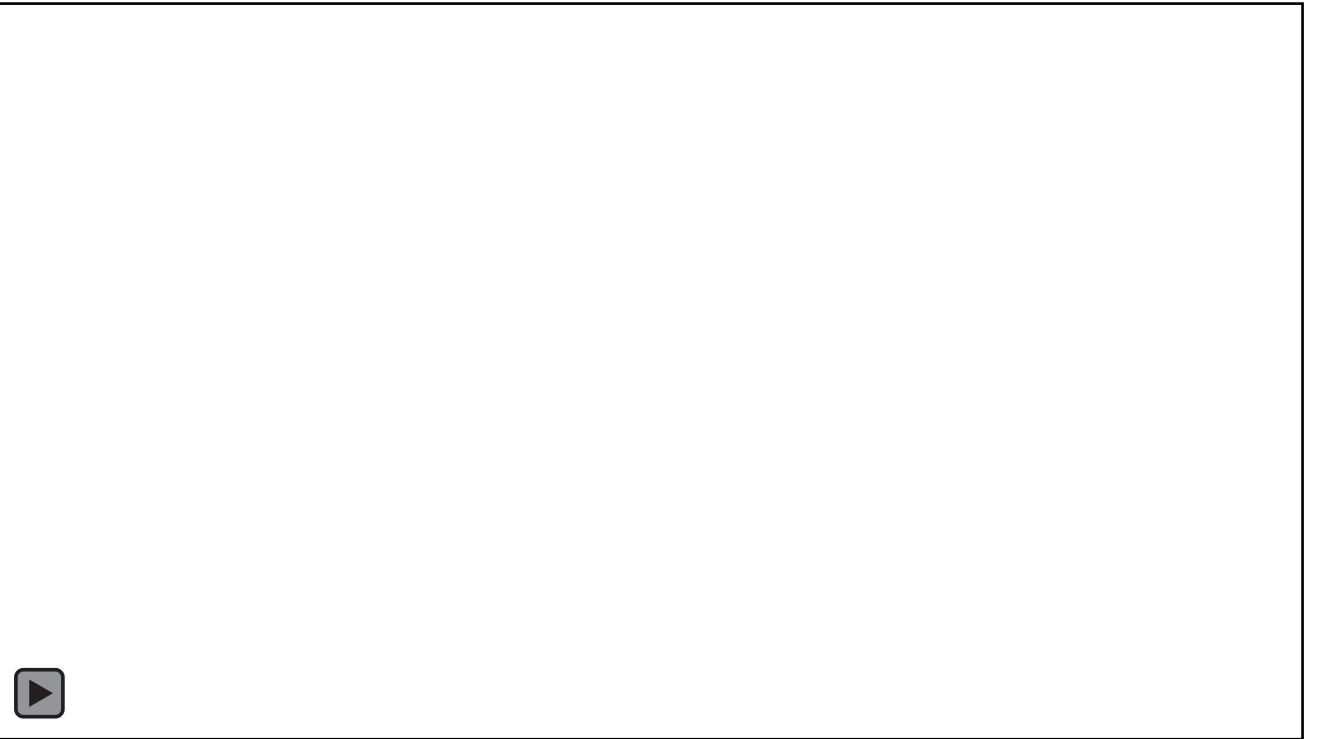
First Play the Slideshow, then click the link below

[Click here to edit video on PresenterMedia.com](https://www.PresenterMedia.com)



# Add Your Great Title Here!

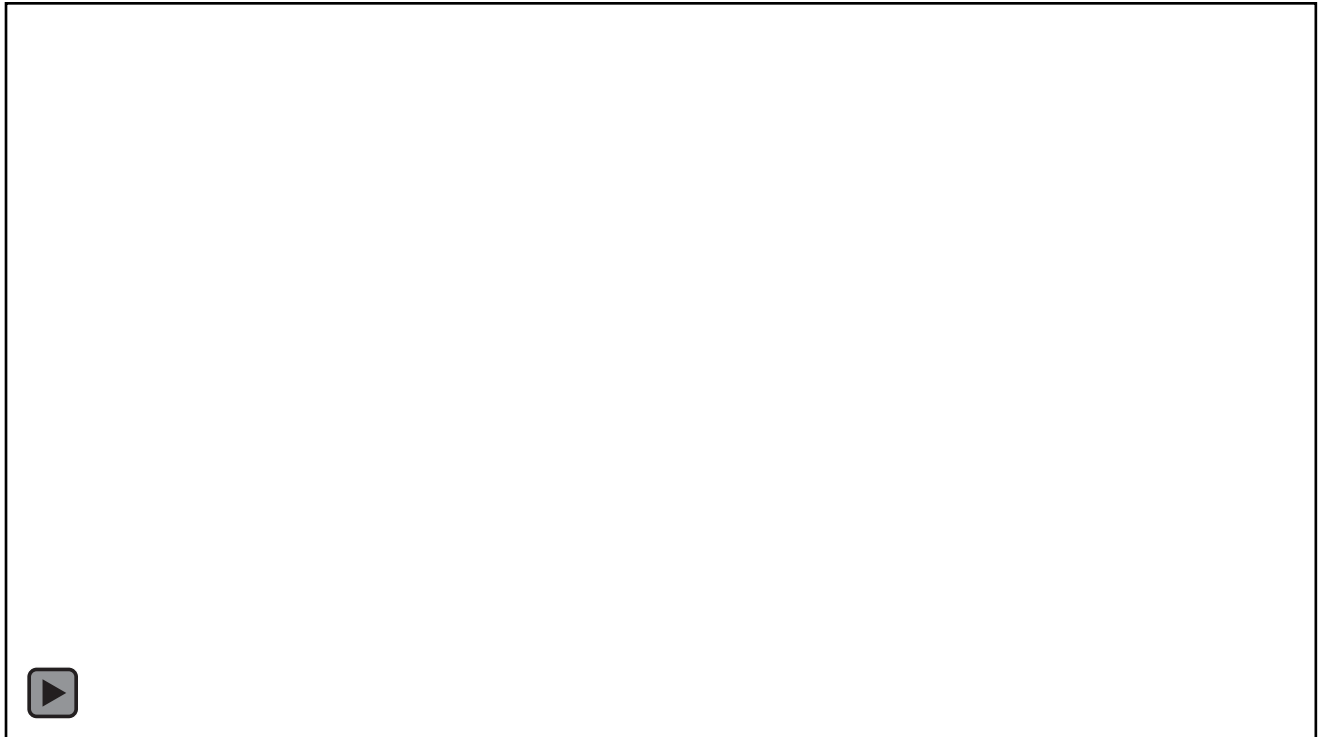
- Add a Graphic, Chart or Informational Text Here.
- To add a chart or graph just delete all the text in this box and click an icon.



# Your Great Title Goes Here.

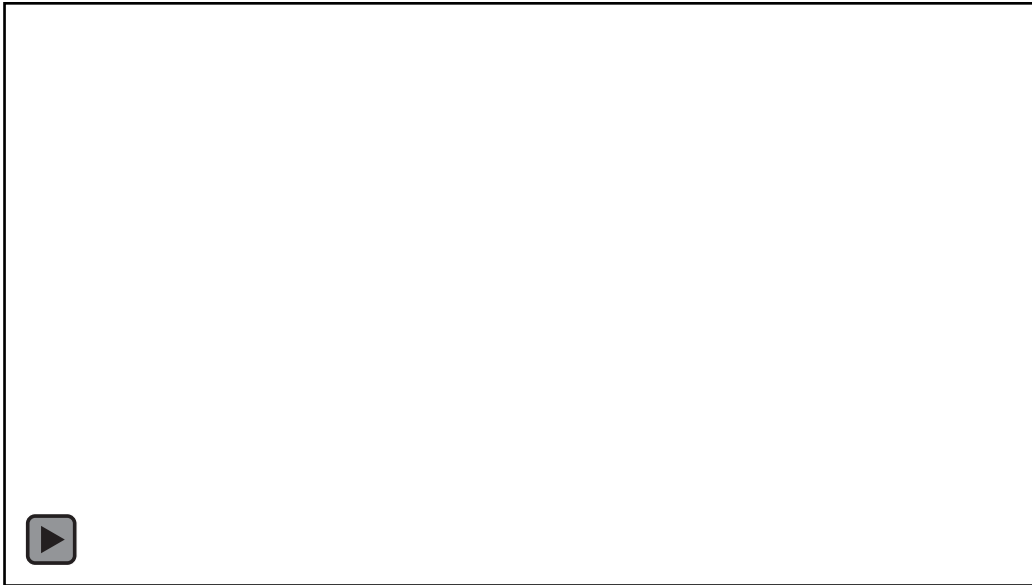
## Say Something...

Add your informational text paragraph here.

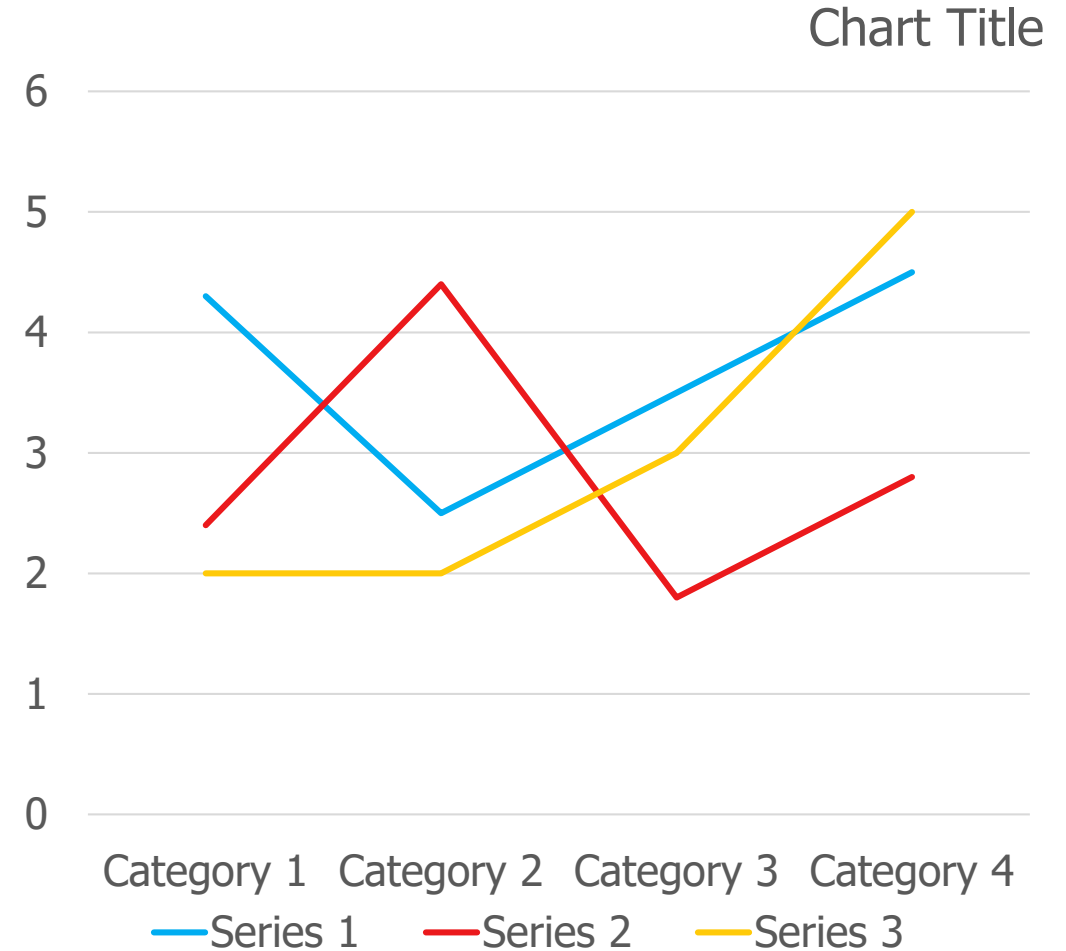


Add your informational text paragraph here. This is an area where you can show extra text for a description. Add your informational text paragraph here. This is an area where you can show extra text for a description.

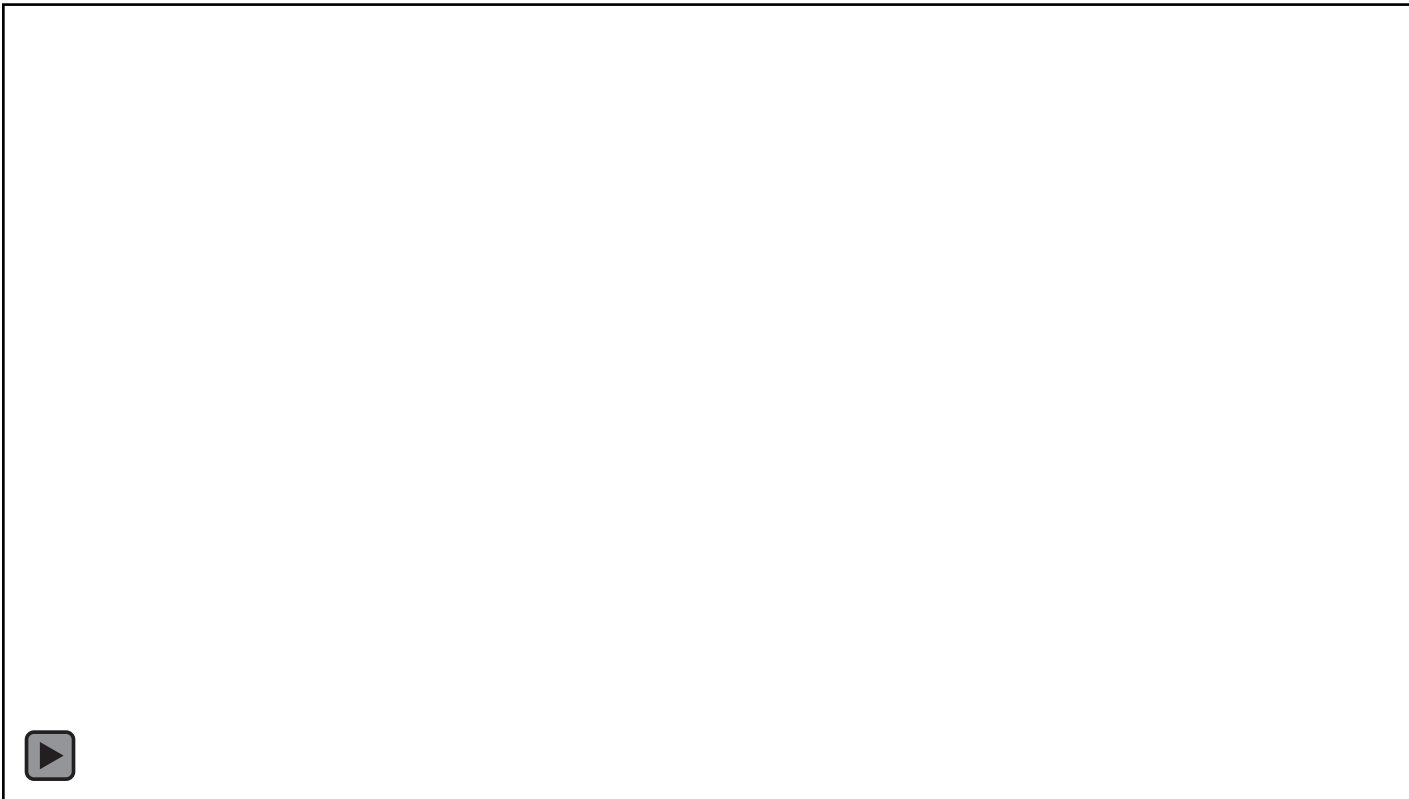
# Add Your Great Title Here!



Add your informational text paragraph here. This is an area where you can show extra text for a description.



# Your Great Title Here



- Add a Graphic, Chart or Informational Text Here.
- To add a chart or graph just delete all the text in this box and click an icon.

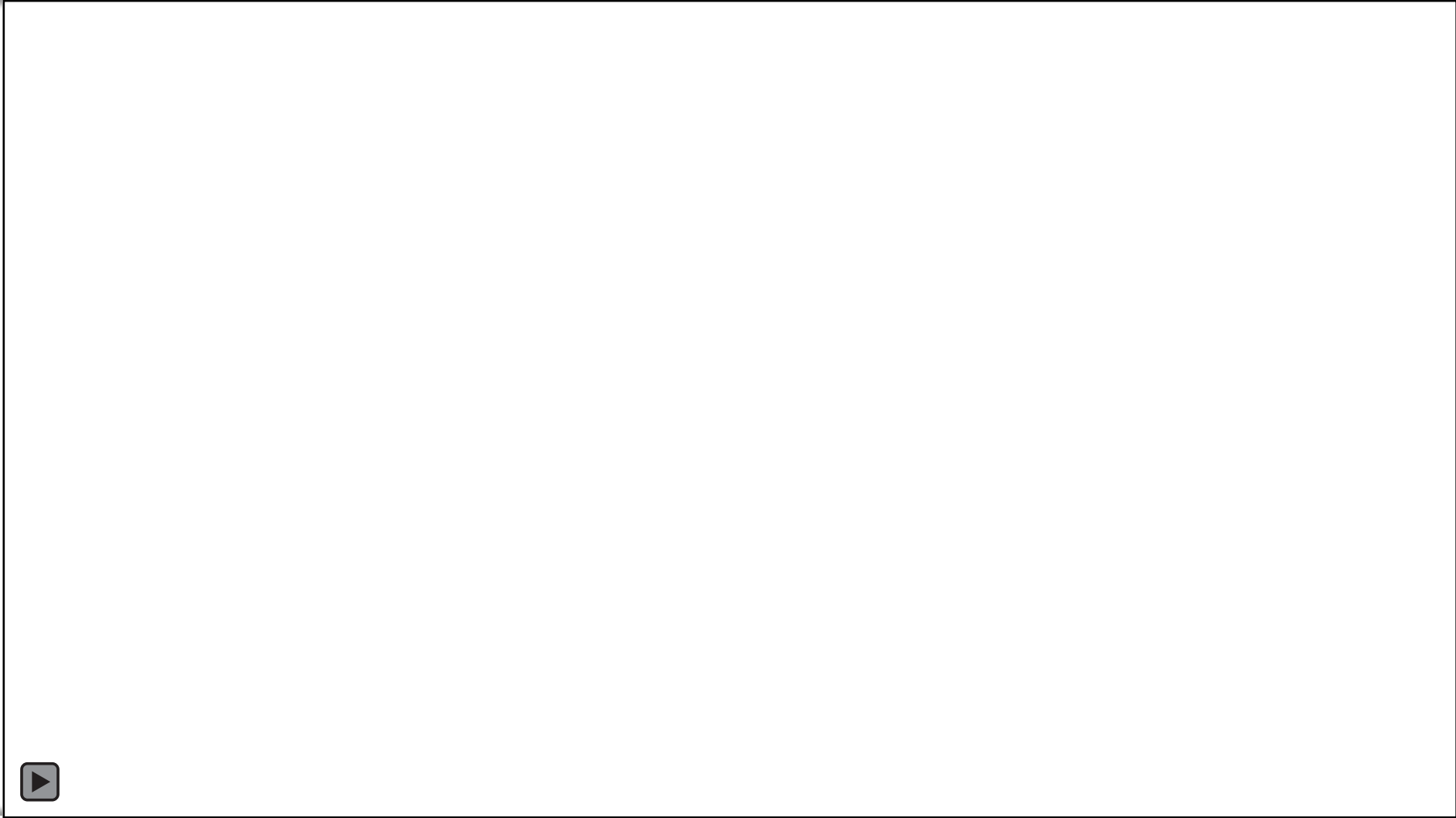
**Add Your Great Title  
Here!**

Add a Graphic, Chart or  
Informational Text Here.

To add a chart or graph  
just delete all the text in  
this box and click an icon.



# Add Your Great Title Here!

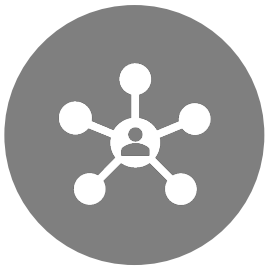


Optional Subtitle Here



# Your Great Title Here

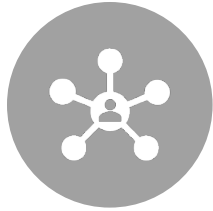
Add your informational text paragraph here. This is an area where you can show extra text for a description.



**Icon description**



# Your Great Title Here



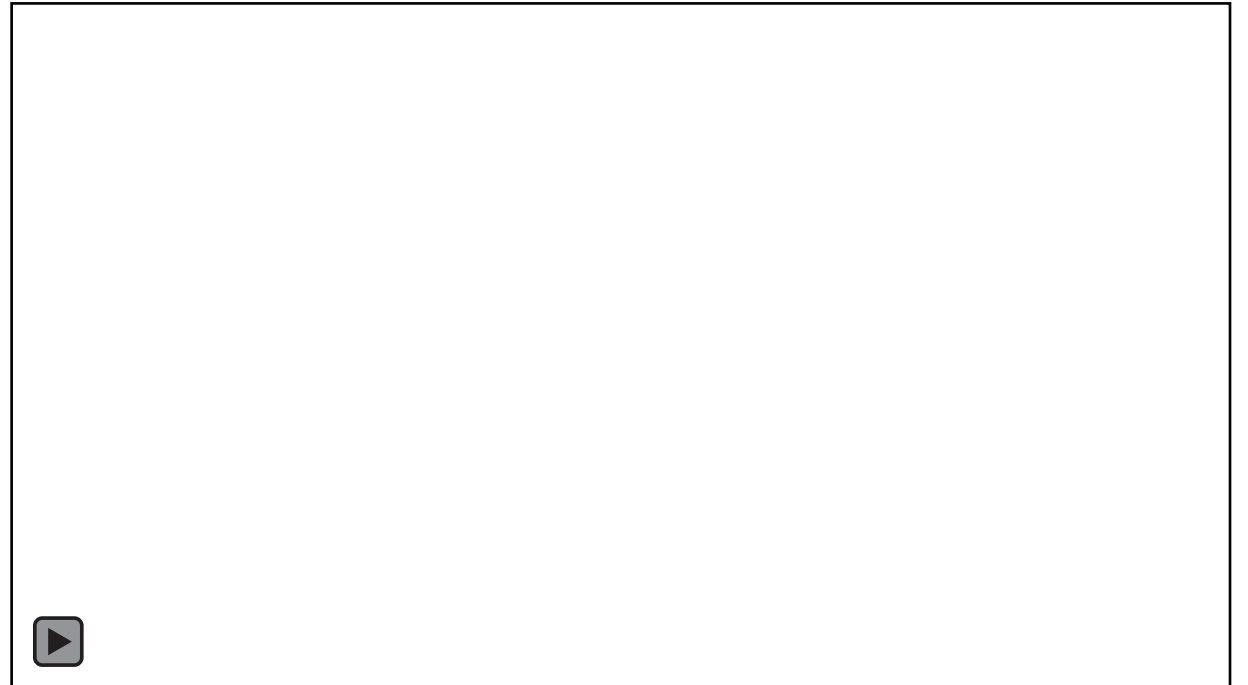
Add your informational text paragraph here.



Add your informational text paragraph here.



Add your informational text paragraph here.



## Compare Something

- Add a Graphic, Chart or Informational Text Here.
- To add a chart or graph just delete all the text in this box and click an icon.



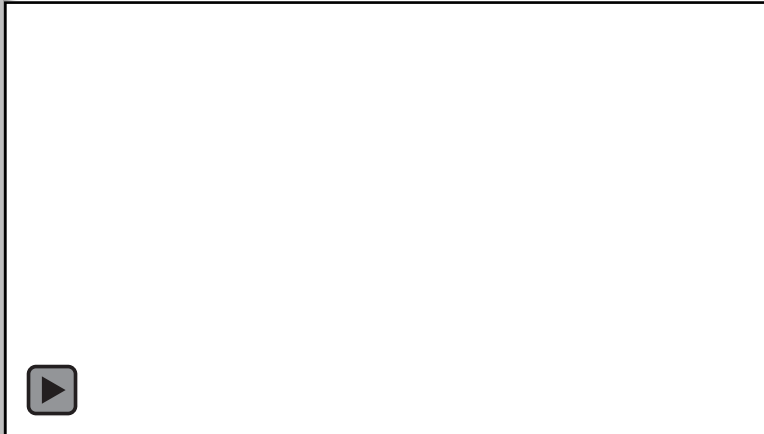
## Compare Something

- Add a Graphic, Chart or Informational Text Here.
- To add a chart or graph just delete all the text in this box and click an icon.

# Your Great Title Here

## Add Your Great Title Here!

- Add a Graphic, Chart or Informational Text Here.
- To add a chart or graph just delete all the text in this box and click an icon.



## Add Your Great Title Here!

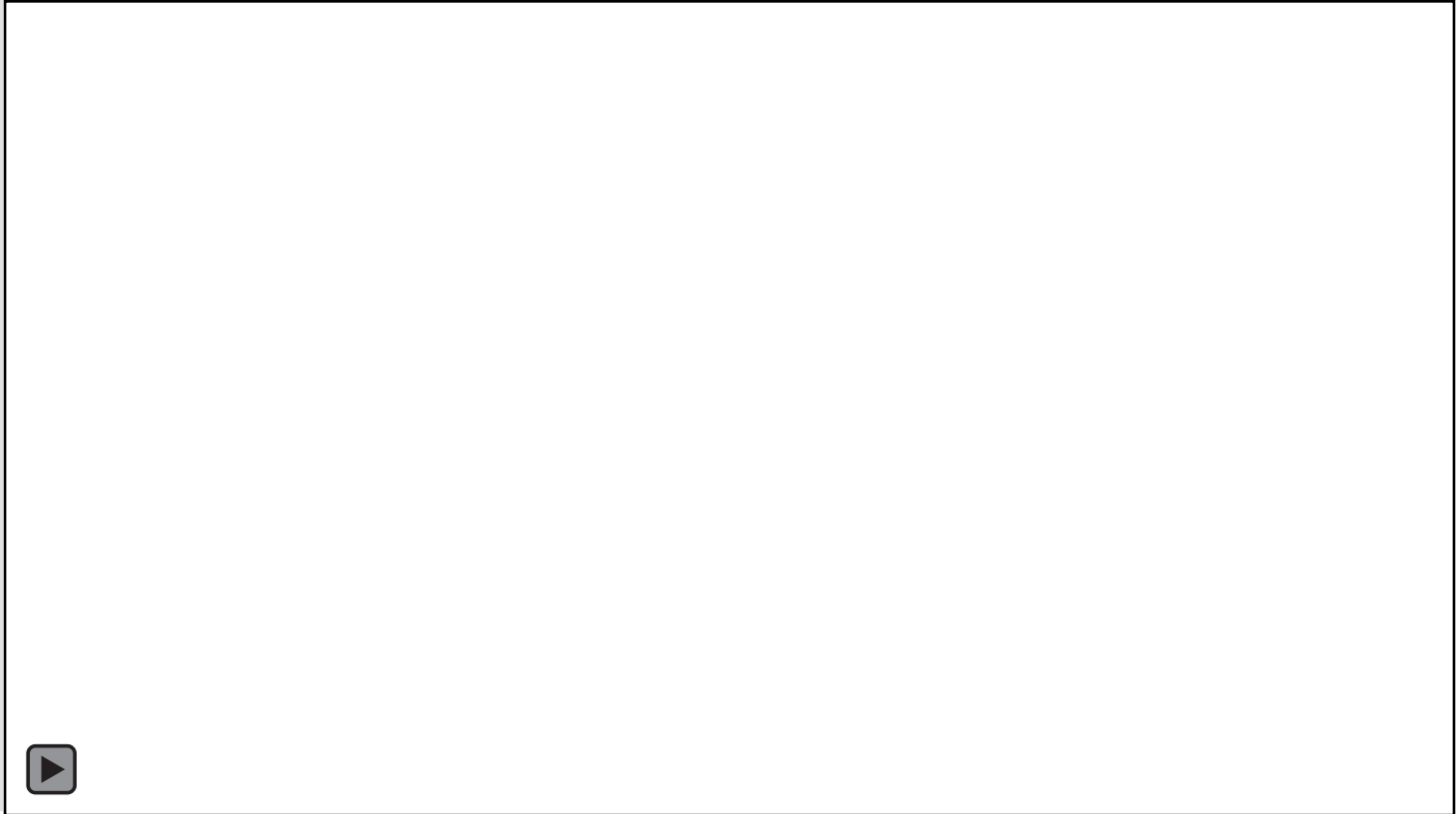
- Add a Graphic, Chart or Informational Text Here.
- To add a chart or graph just delete all the text in this box and click an icon.

Add an informative Subtitle Here



**2010**

Lorem ipsum dolor sit amet, omnes volutpat ex sed, mediocrem maiestatis ius in ullamcorper.



**2015**

Lorem ipsum dolor sit amet, omnes volutpat ex sed, mediocrem maiestatis ius in ullamcorper.



**2017**

Lorem ipsum dolor sit amet, omnes volutpat ex sed, mediocrem maiestatis ius in ullamcorper.



**2018**

Lorem ipsum dolor sit amet, omnes volutpat ex sed, mediocrem maiestatis ius in ullamcorper.

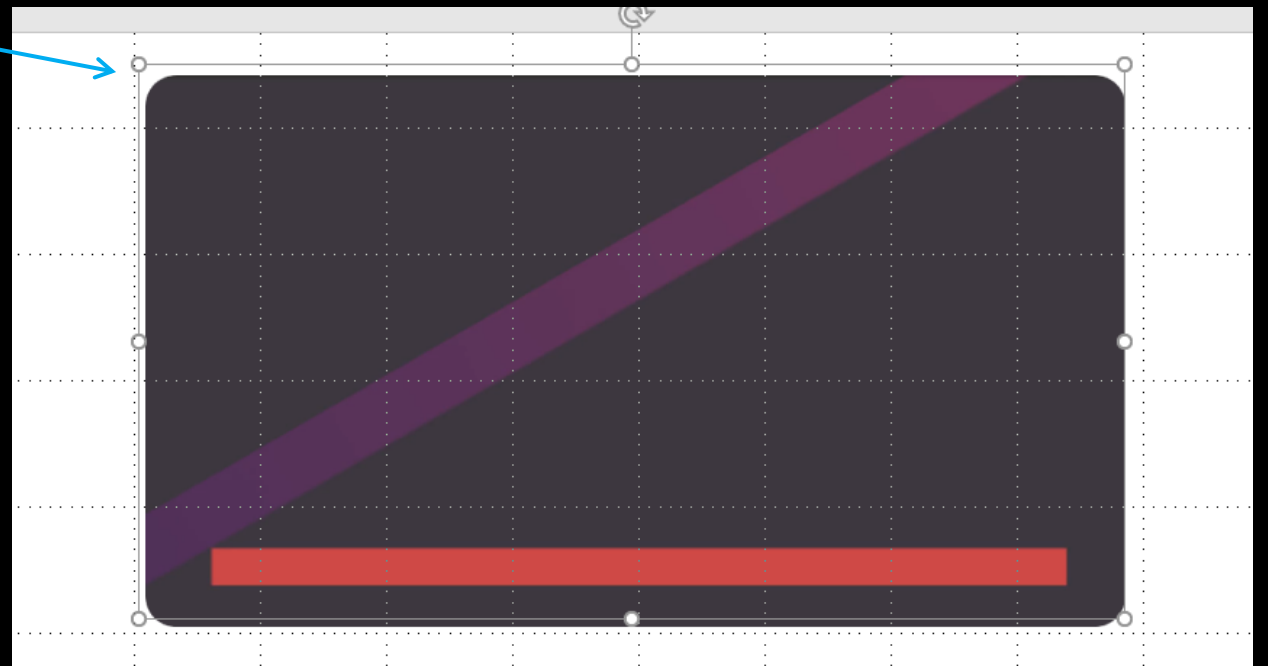
# How to select the video on a slide

- A clear shape is placed over the video to allow the slide to advance to the next when clicking on the video.
- If this shape is not in place over the video, the video will loop everything it is clicked.

1. Click on top of the video and you will see an outline around the outside of the video. This is the shapes selection box.

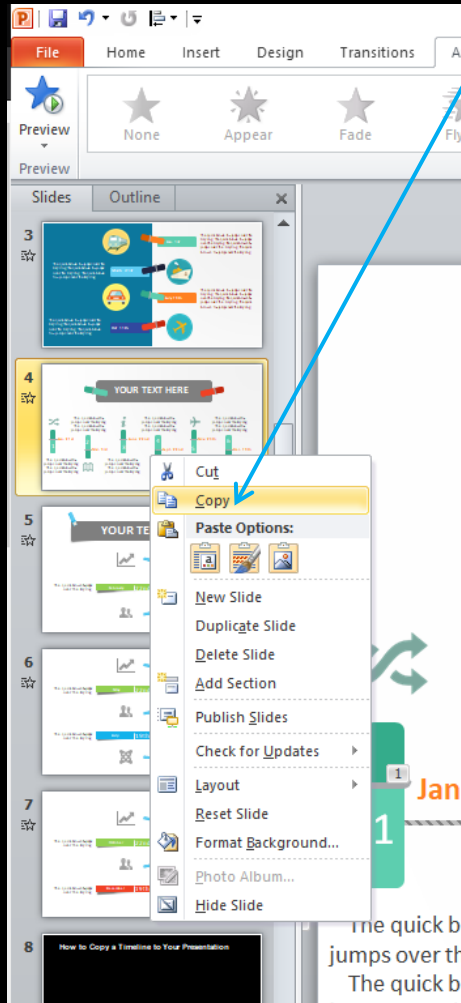
2. Once select you can right click and select Send to Back from the options.

3. You can now select the video. Once done, right click on video and follow step 2.



# How to Copy a Slide to Your Presentation

1. Right click on the slide you would like to copy and select Copy from the menu.

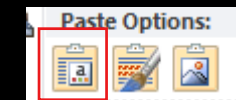


2. Go to your PowerPoint you would like to insert it into.

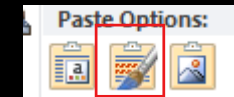
3. Right click on a slide.

4. Select a paste option.

## Paste Options.

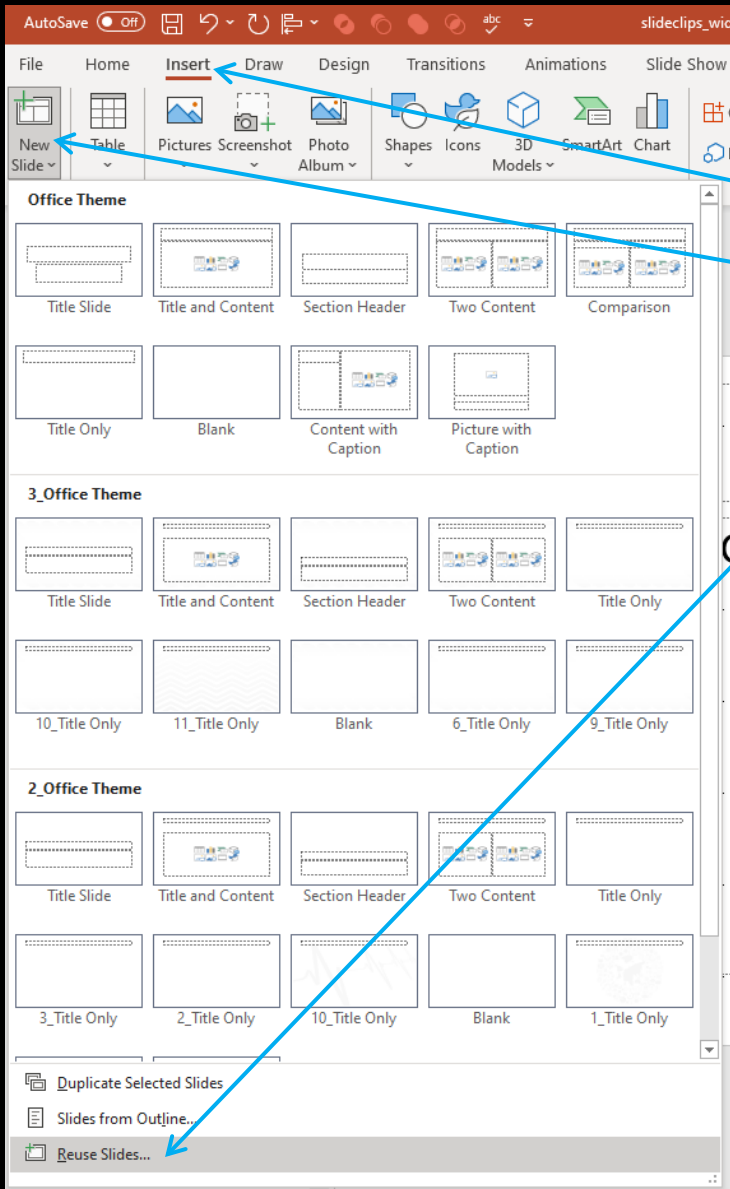


Uses destination Theme – Uses the theme colors of your PowerPoint presentation.



Uses Source Formatting– Uses the theme colors from the timeline template.

# Copy slides using Reuse Slides Option



1. Open the PowerPoint you would like to insert the slides into.

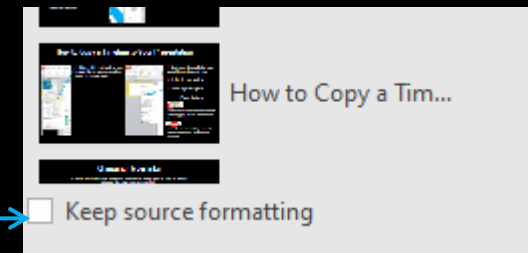
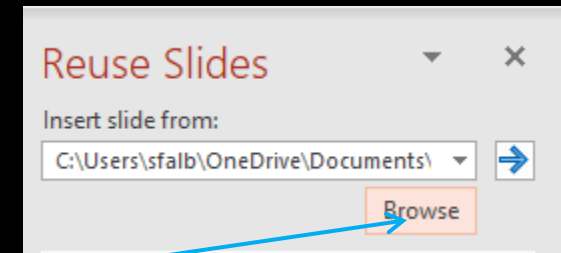
2. Click on insert from the top menu and find the New Slide option.

3. Click reuse slides from the option window.

4. Select the browse option.

5. Load the PowerPoint file you want to add slides from. Then select Keep source formatting at the bottom of the loaded slides.

6. Click on any slide to load it into your existing presentation.







## Questions? More Information?

- Visit – [www.PresenterMedia.com](http://www.PresenterMedia.com)
- [support@presentermedia.com](mailto:support@presentermedia.com)
  
- 4416 S. Technology Dr
- Sioux Falls, SD 57106

\*Note – If video edit link on the first slide does not work this mean it has expired. In this case, video [PresenterMedia.com](http://PresenterMedia.com) to edit the video in this template.