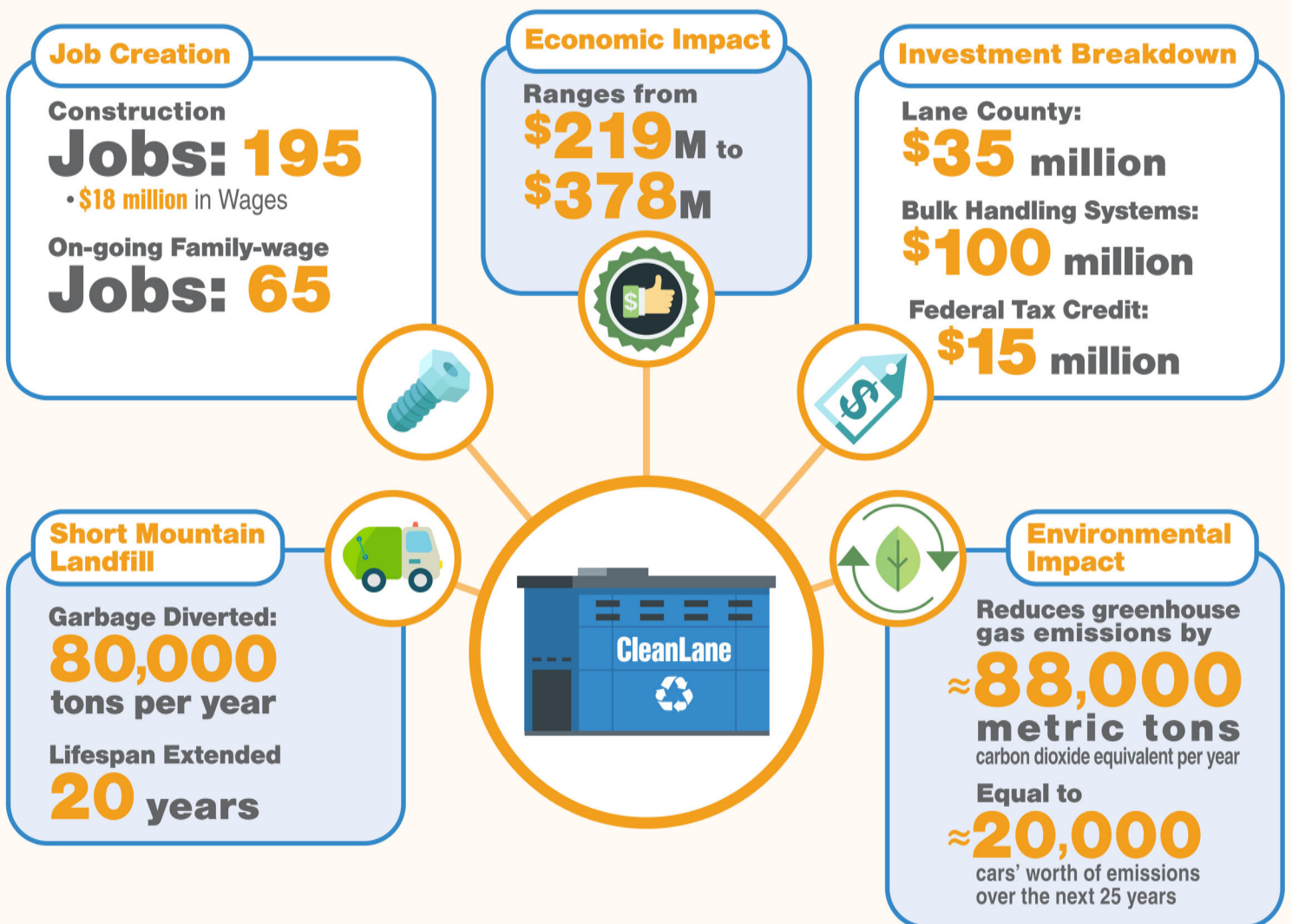


CleanLane Resource Recovery Facility



Lane County is proud to partner with an affiliate of Eugene-based Bulk Handling Systems on a state-of-the-art **CleanLane Resource Recovery Facility** to be built in Goshen, Oregon.

When completed, this new facility will dramatically improve local community efforts to reduce greenhouse gas emissions, improve recycling capabilities, and extend the lifespan of the County's landfill by diverting more than 80,000 tons of material annually.



What is the CleanLane Resource Recovery Facility?

This facility will use technology and equipment to sort residential and commercial garbage before it goes to the landfill, removing recyclable and organic waste. The facility will then process the organic waste to capture all of its methane potential to produce renewable natural gas to be used as transportation fuel. The resulting material is rendered inert and will be used as cover and slope stabilization at the landfill.

WASTE MANAGEMENT PROCESSES

Current Process



All residential and commercial mixed garbage goes to Short Mountain Landfill

≈40% of Methane Emissions are currently released into the atmosphere¹



Up to only 60% of Methane Emissions currently captured¹

¹ ESI: Short Mountain Updated LandGEM Analysis and EPUD's own numbers for most recent 9 years. (bit.ly/ESI-SML-LandGEM-Analysis).

CleanLane Process



Mixed garbage hauled to CleanLane facility



Short Mountain Landfill

Life extended:
20 years

Return on Investment:
\$300M

Reduced:
Greenhouse Gas Emissions

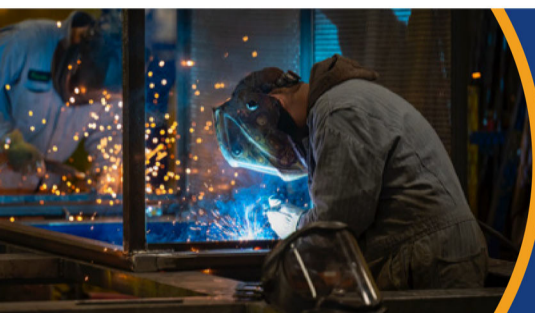
90-95% of High-value Commodities are extracted from solid waste on first pass



Total Recyclables:
80,000 tons diverted each year
(including PET plastic, paper, metals & organic materials)



Organic Materials Taken Out and Converted to Inert Landfill Cover and:
1 million diesel gallon equivalents of **renewable natural gas**



About Bulk Handling Systems

Established in 1976, Bulk Handling Systems (BHS) is headquartered in Eugene, Oregon, along with its primary manufacturing hub. BHS provides over 300 jobs across its Eugene, Nashville and Amsterdam locations. Renowned for building some of the world's largest and most robust Material Recovery Facilities, BHS consistently achieves industry-leading throughput, recovery and purity rates.